

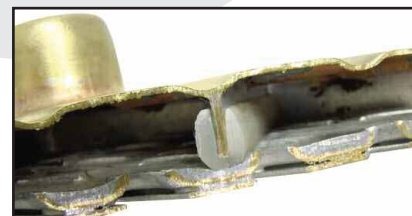
REPLACEMENT CORE SECTIONS FOR CAT

NORTHERN'S REPLACEMENT SECTIONS FOR FOLDED®, MODULAR® AND "R" SERIES® ARE BETTER BECAUSE:

- Northern units feature .009" lock seam tubes vs. OE's .007" tube
- Tubes are double tinned for unsurpassed adhesion... inside and out
- Tubes are double-stuffed on the entire perimeter ("R" Series®) and corners (Modular®) meaning tube inside a tube for rigid strength
- "R" and Modular® tanks are soldered with a high strength regular solder for repair-ability... the OE beta-weld are not
- Each unit is checked in a dimensional control jig, ensuring guaranteed fit
- Steel reinforcement plate at the header
- When center fin mounting points are used, they are double tinned
- Northern folded unit features silver soldered tube to header and tank joints as the OE design is famous for cracking



"R" Series Cut A-Way View



Close up View Northern Improved Baffle Design Over OEM

INDIVIDUAL, REPLACEABLE CORE SECTION FOR "R" SERIES®, MODULAR® AND FOLDED®

Viton® is a trademark of DuPont and is a petroleum resistant material.

Complete radiator is made up of multiple sections of Folded®, Modular®, "R" Series® and Caterpillar are Trademark of Caterpillar.

GASKETS RUBBER OR VITON MATERIAL



"R" SERIES® GASKETS

GK9004R - Rubber
GK9004V - Viton®



MODULAR® GASKETS

GK9002R - Rubber
GK9002V - Viton®
GK9003R - Rubber
GK9003V - Viton®



FOLDED® GASKETS

GK9000R - Rubber
GK9000V - Viton®
GK9001R - Rubber
GK9001V - Viton®